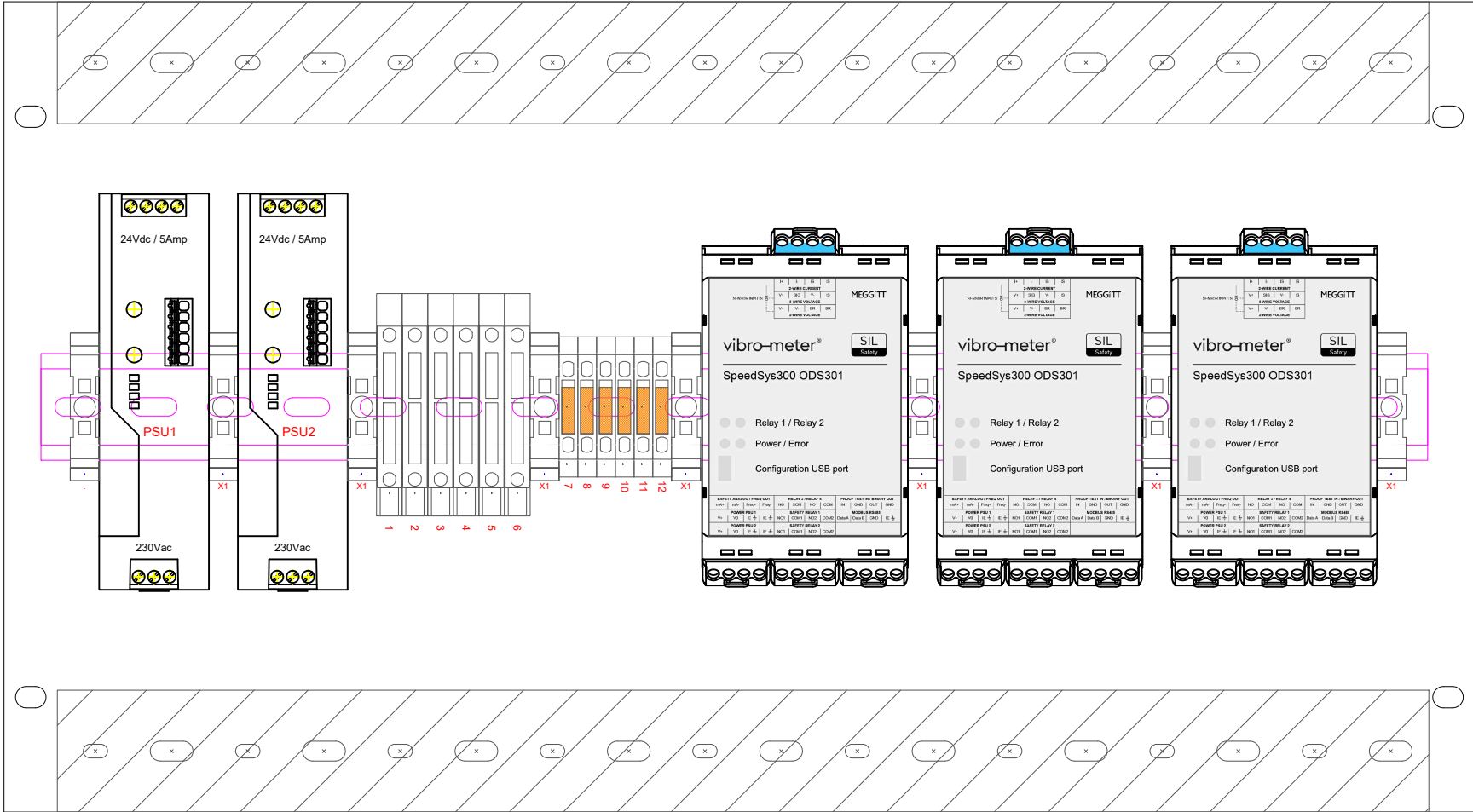


OVERSPEED PANEL



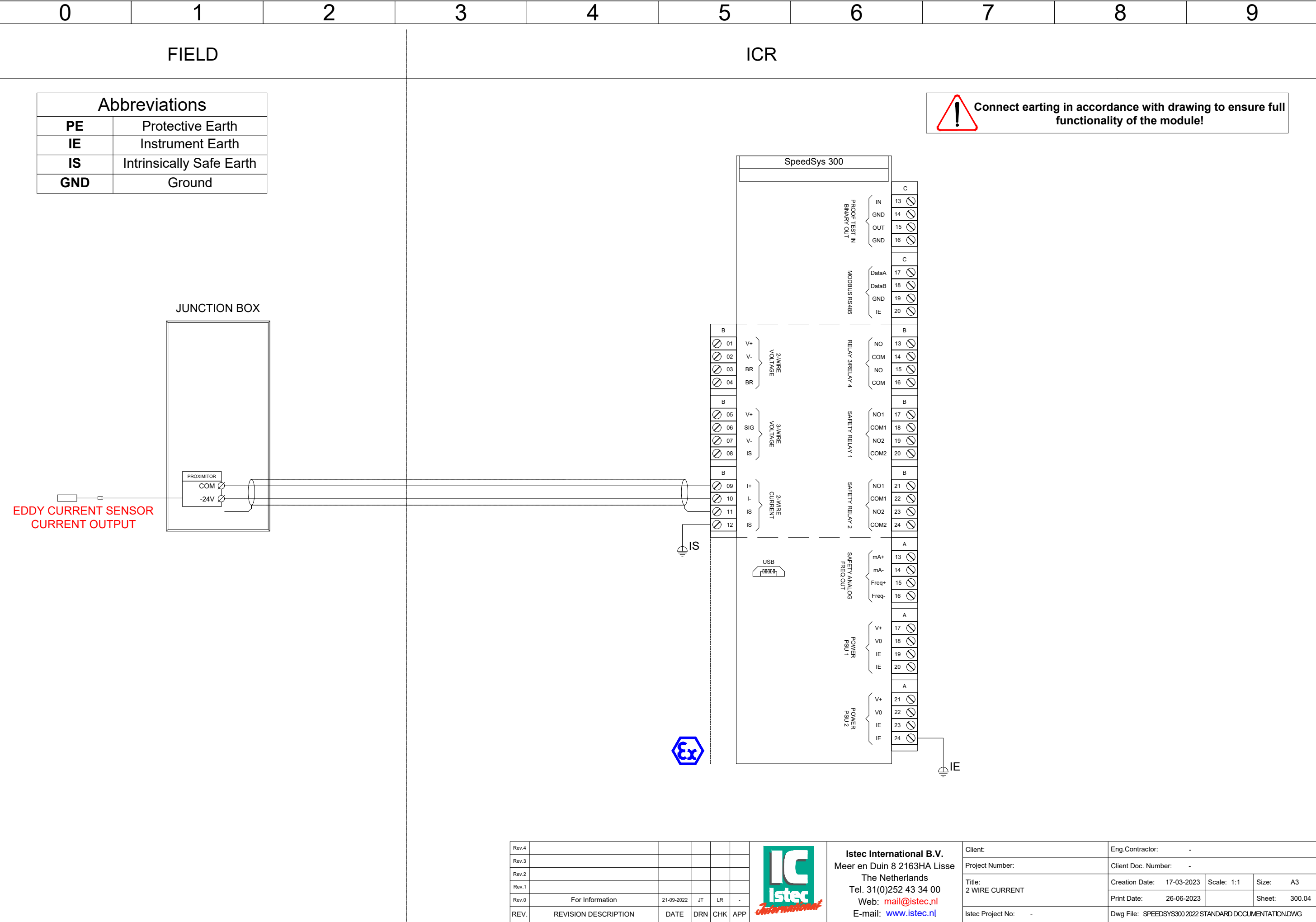
Rev.4					
Rev.3					
Rev.2					
Rev.1					
Rev.0	For Information	21-09-2022	JT	LR	-
REV.	REVISION DESCRIPTION	DATE	DRN	CHK	APP

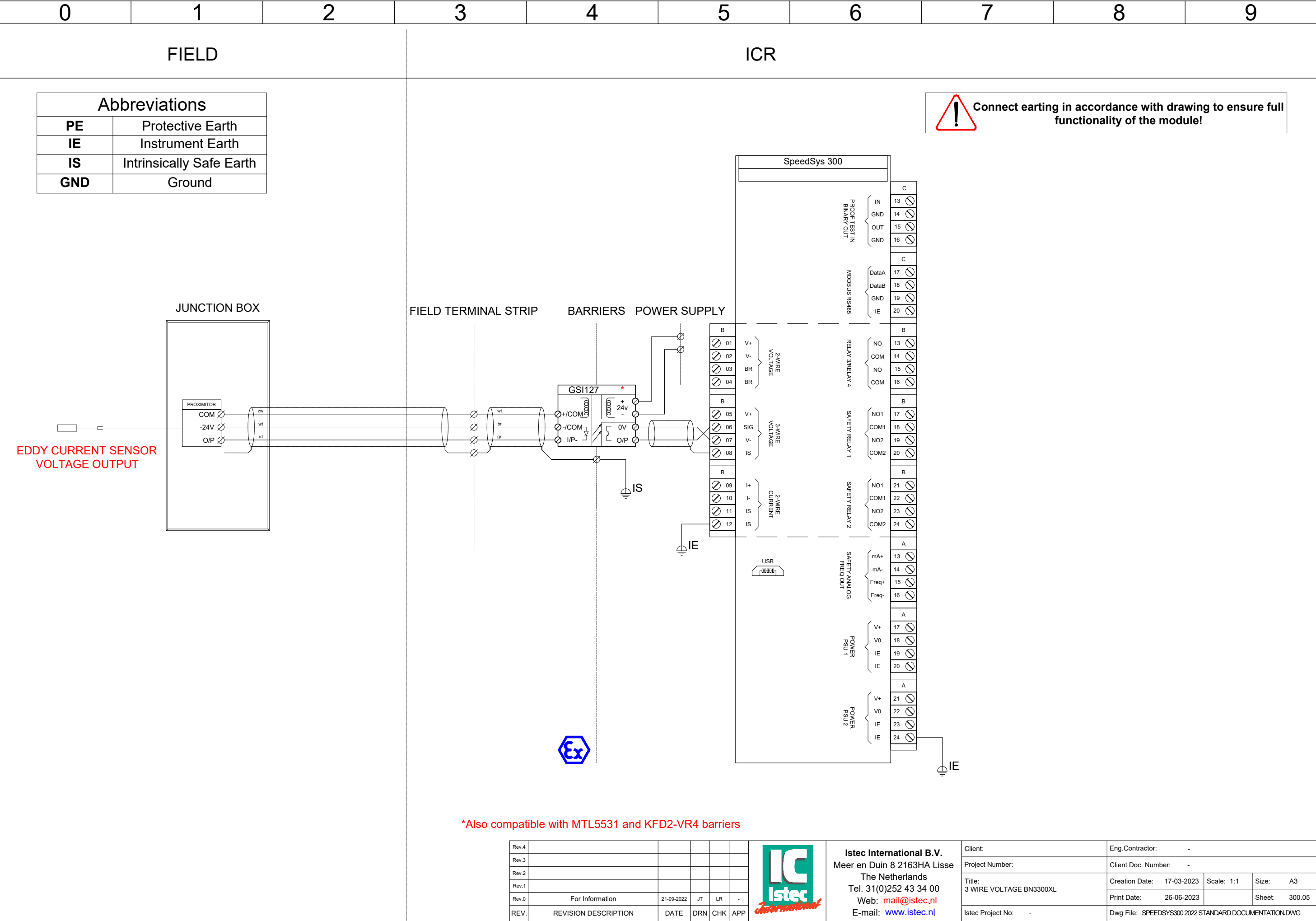


Istec International B.V.
Meer en Duin 8 2163HA Lisse
The Netherlands
Tel. 31(0)252 43 34 00
Web: mail@istec.nl
E-mail: www.istec.nl

Client:	Eng.Contractor: -		
Project Number:	Client Doc. Number: -		
Title: LAYOUT AND DIMENSIONS	Creation Date:	17-03-2023	Scale: 1:2
	Print Date:	26-06-2023	Size: A3
Istec Project No: -			Sheet: 300.01
	Dwg File: SPEEDSYS300 2022 STANDARD DOCUMENTATION.DWG		

 **Connect earthing in accordance with drawing to ensure full functionality of the module!**

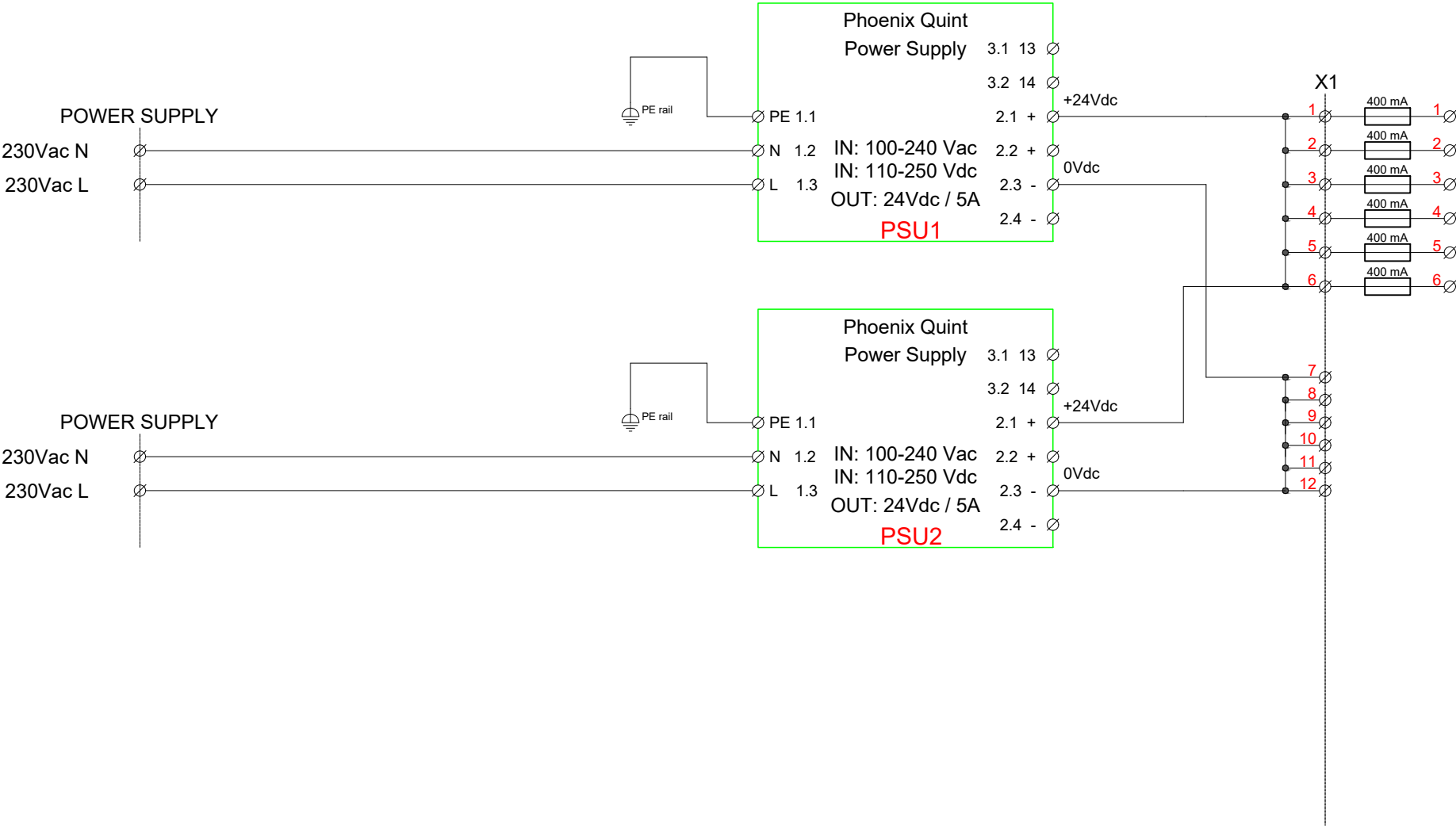




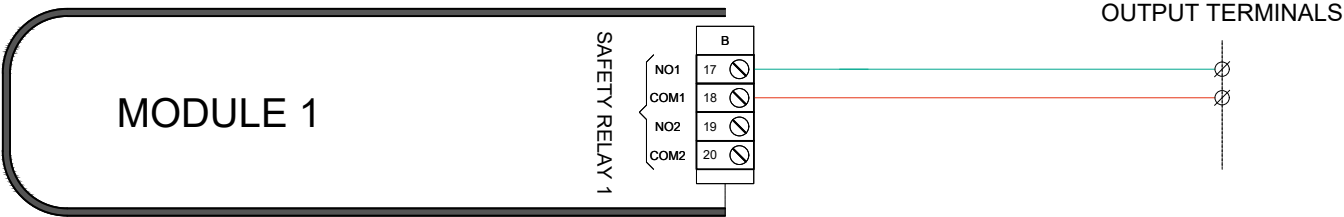


Connect earthing in accordance with drawing to ensure full functionality of the module!

Abbreviations	
PE	Protective Earth
IE	Instrument Earth
IS	Intrinsically Safe Earth
GND	Ground

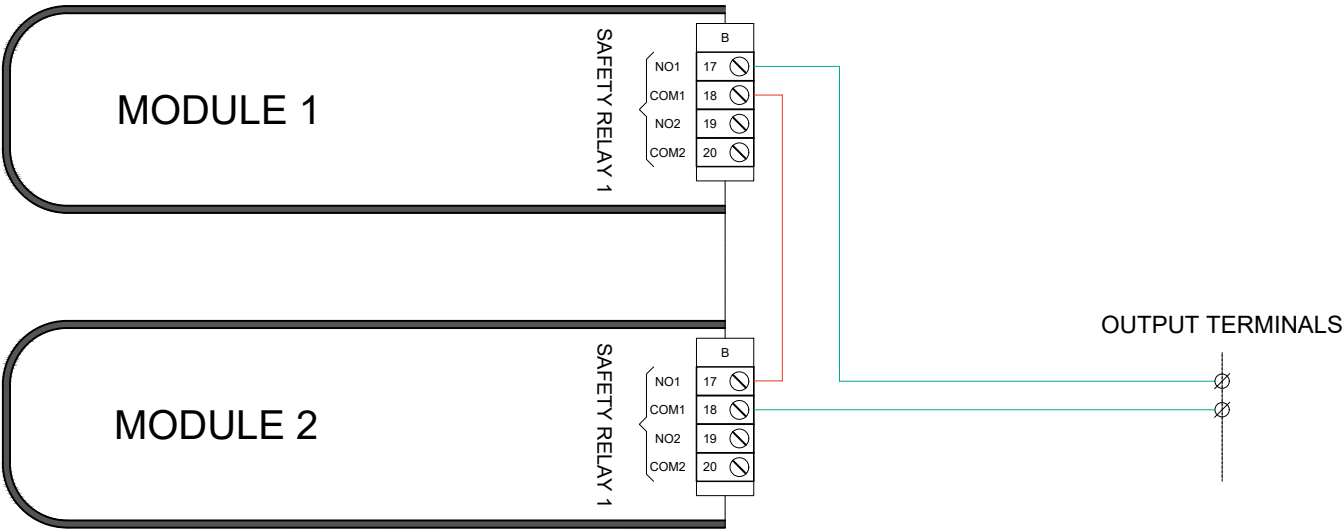


Maximum switching capacity relays	30 Vdc / 2A (resistive load)
	30 Vdc / 100mA (inductive load)



SAFETY RELAY - 1oo2 Wiring

Maximum switching capacity relays	30 Vdc / 2A (resistive load)
	30 Vdc / 100mA (inductive load)



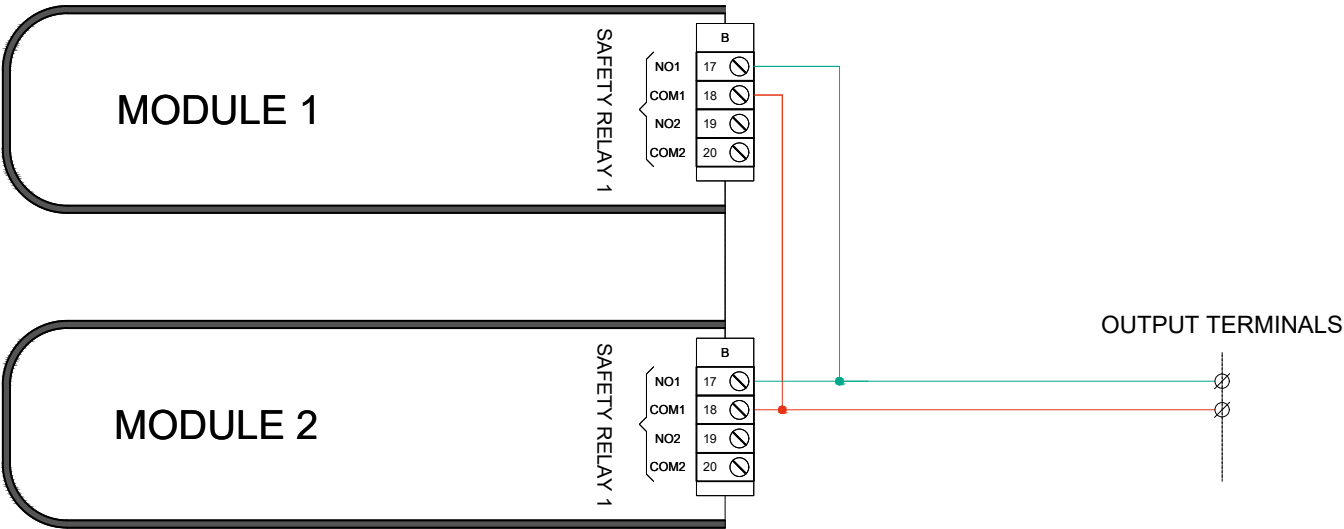
Rev.4					
Rev.3					
Rev.2					
Rev.1					
Rev.0	For Information	21-09-2022	JT	LR	-
REV.	REVISION DESCRIPTION	DATE	DRN	CHK	APP



Istec International B.V.
Meer en Duin 8 2163HA Lisse
The Netherlands
Tel. 31(0)252 43 34 00
Web: mail@istec.nl
E-mail: www.istec.nl

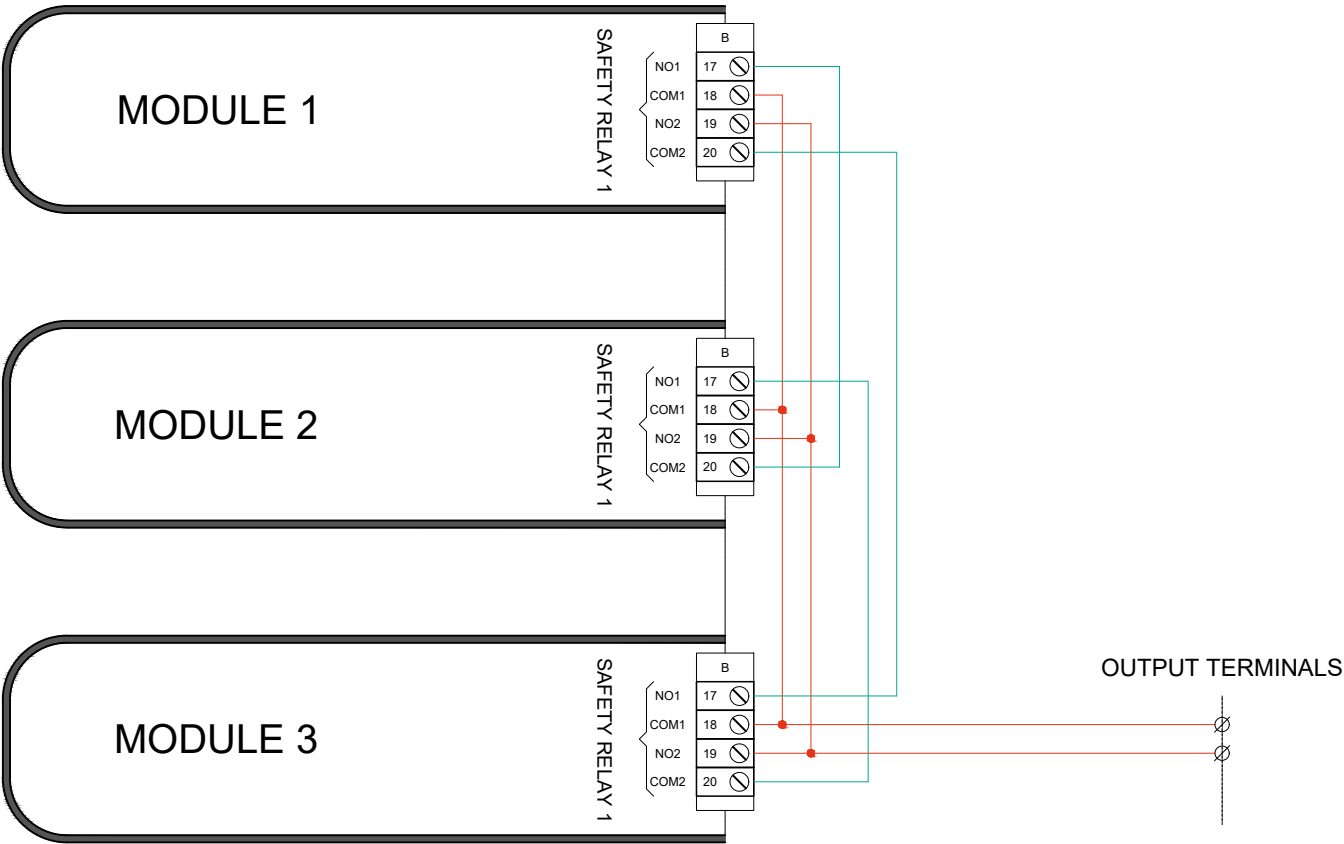
Client:	Eng.Contractor: -		
Project Number:	Client Doc. Number: -		
Title: SAFETY RELAY 1oo2	Creation Date: 17-03-2023	Scale: 1:1	Size: A3
	Print Date: 26-06-2023		Sheet: 300.08
Istec Project No: -	Dwg File: SPEEDSYS300.2022 STANDARD DOCUMENTATION.DWG		

Maximum switching capacity relays	30 Vdc / 2A (resistive load)
	30 Vdc / 100mA (inductive load)



SAFETY RELAY - 2oo3 Wiring

Maximum switching capacity relays	30 Vdc / 2A (resistive load)
	30 Vdc / 100mA (inductive load)



Rev.4					
Rev.3					
Rev.2					
Rev.1					
Rev.0	For Information	21-09-2022	JT	LR	-
REV.	REVISION DESCRIPTION	DATE	DRN	CHK	APP



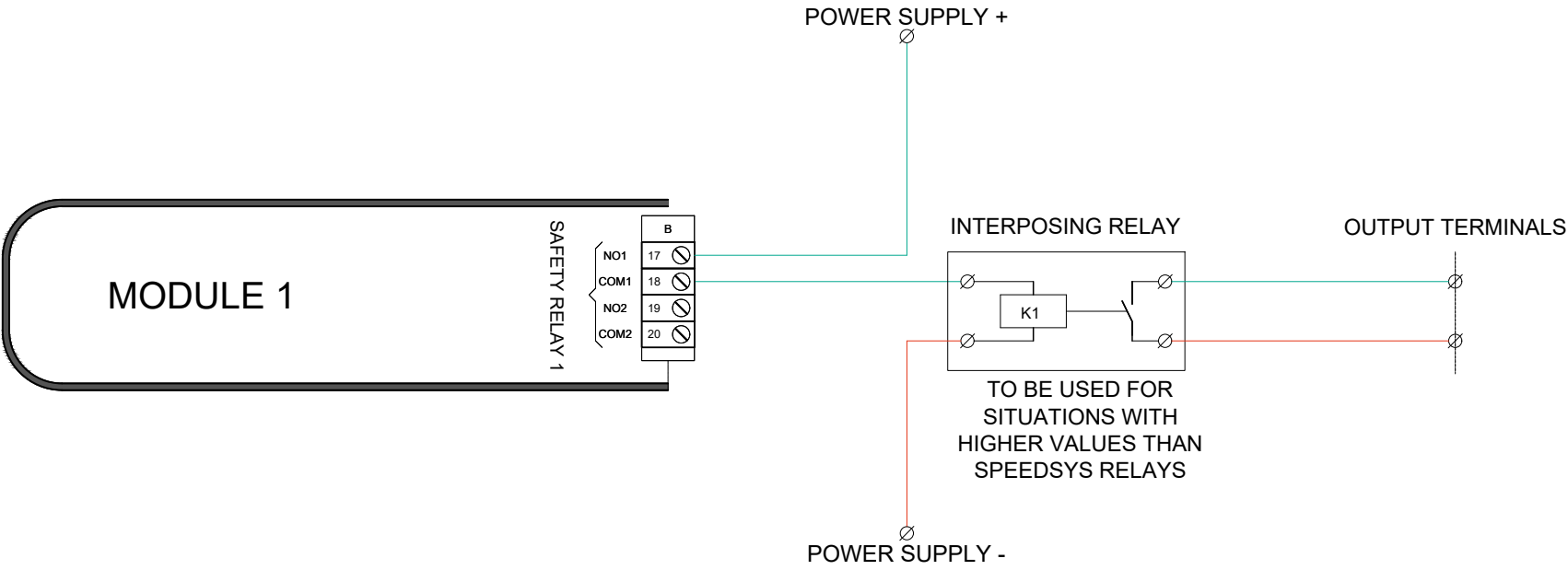
Istec International B.V.
Meer en Duin 8 2163HA Lisse
The Netherlands
Tel. 31(0)252 43 34 00
Web: mail@istec.nl
E-mail: www.istec.nl

Client:	Eng.Contractor: -		
Project Number:	Client Doc. Number: -		
Title: SAFETY RELAY 2oo3	Creation Date: 17-03-2023	Scale: 1:1	Size: A3
	Print Date: 26-06-2023		Sheet: 300.10
Istec Project No: -	Dwg File: SPEEDSYS300.2022 STANDARD DOCUMENTATION.DWG		

0123456789

INTERPOSING RELAY - Wiring

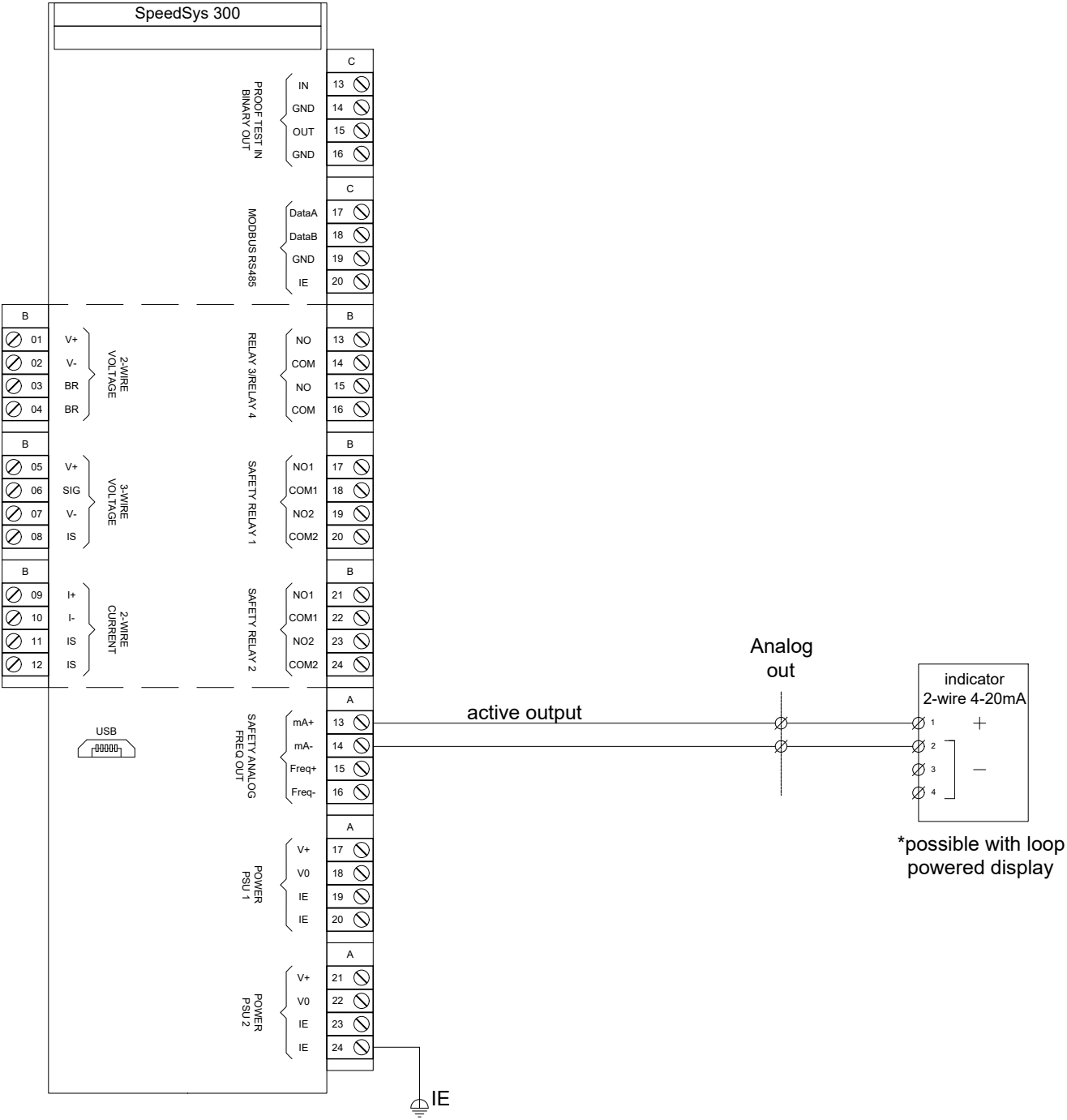
Maximum switching capacity relays	30 Vdc / 2A (resistive load)
	30 Vdc / 100mA (inductive load)



Rev.4						Istec International B.V. Meer en Duin 8 2163HA Lisse The Netherlands Tel. 31(0)252 43 34 00 Web: mail@istec.nl E-mail: www.istec.nl	Client:		Eng. Contractor: -			
Rev.3							Project Number:		Client Doc. Number: -			
Rev.2							Title: INTERPOSING RELAY		Creation Date: 17-03-2023		Scale: 1:1	Size: A3
Rev.1									Print Date: 26-06-2023		Sheet: 300.11	
Rev.0	For Information	21-09-2022	JT	LR			-	Istec Project No: -		Dwg File: SPEEDSYS300 2022 STANDARD DOCUMENTATION.DWG		
REV.	REVISION DESCRIPTION	DATE	DRN	CHK	APP							

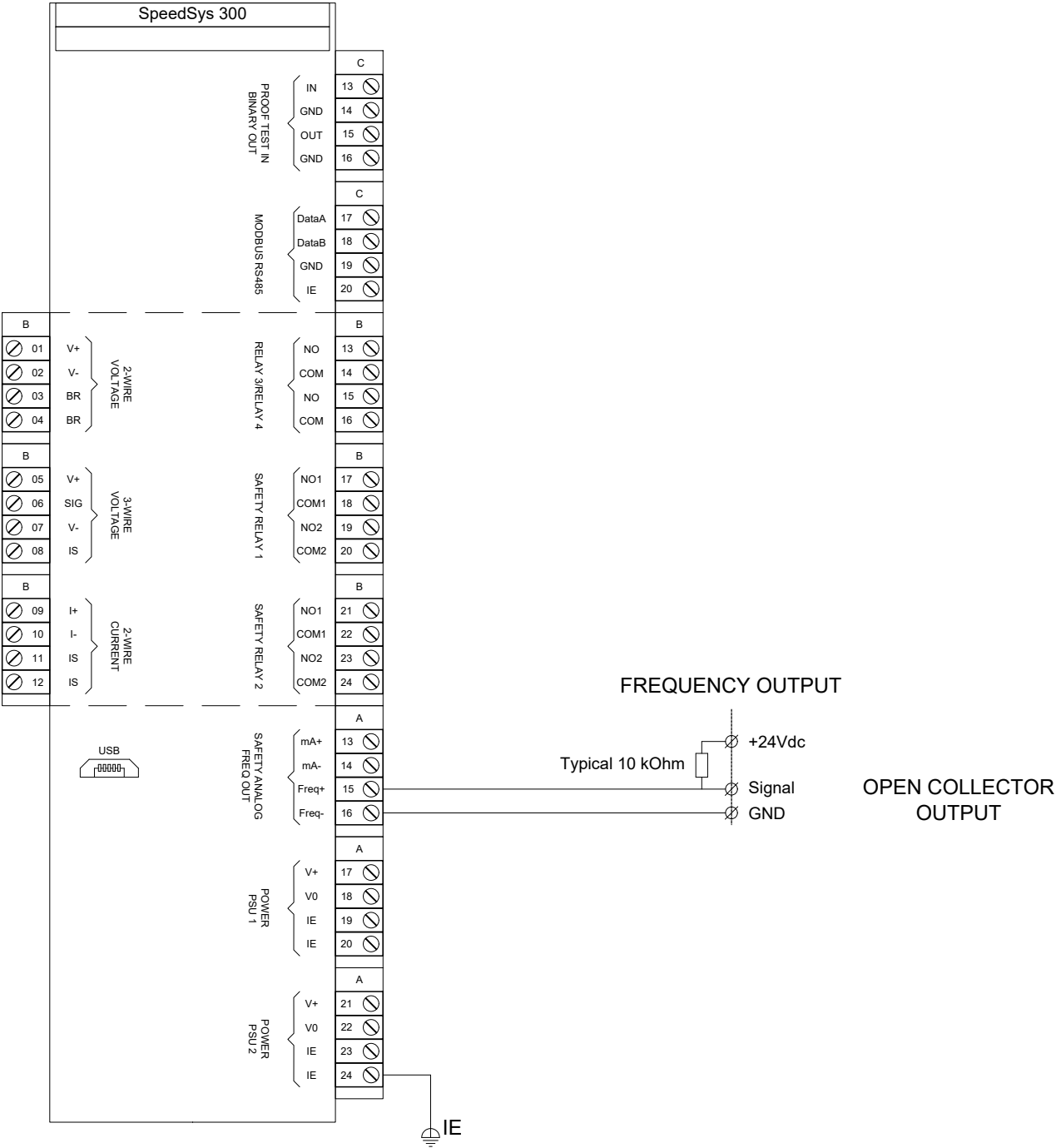
Connect earthing in accordance with drawing to ensure full functionality of the module!

Abbreviations	
PE	Protective Earth
IE	Instrument Earth
IS	Intrinsically Safe Earth
GND	Ground



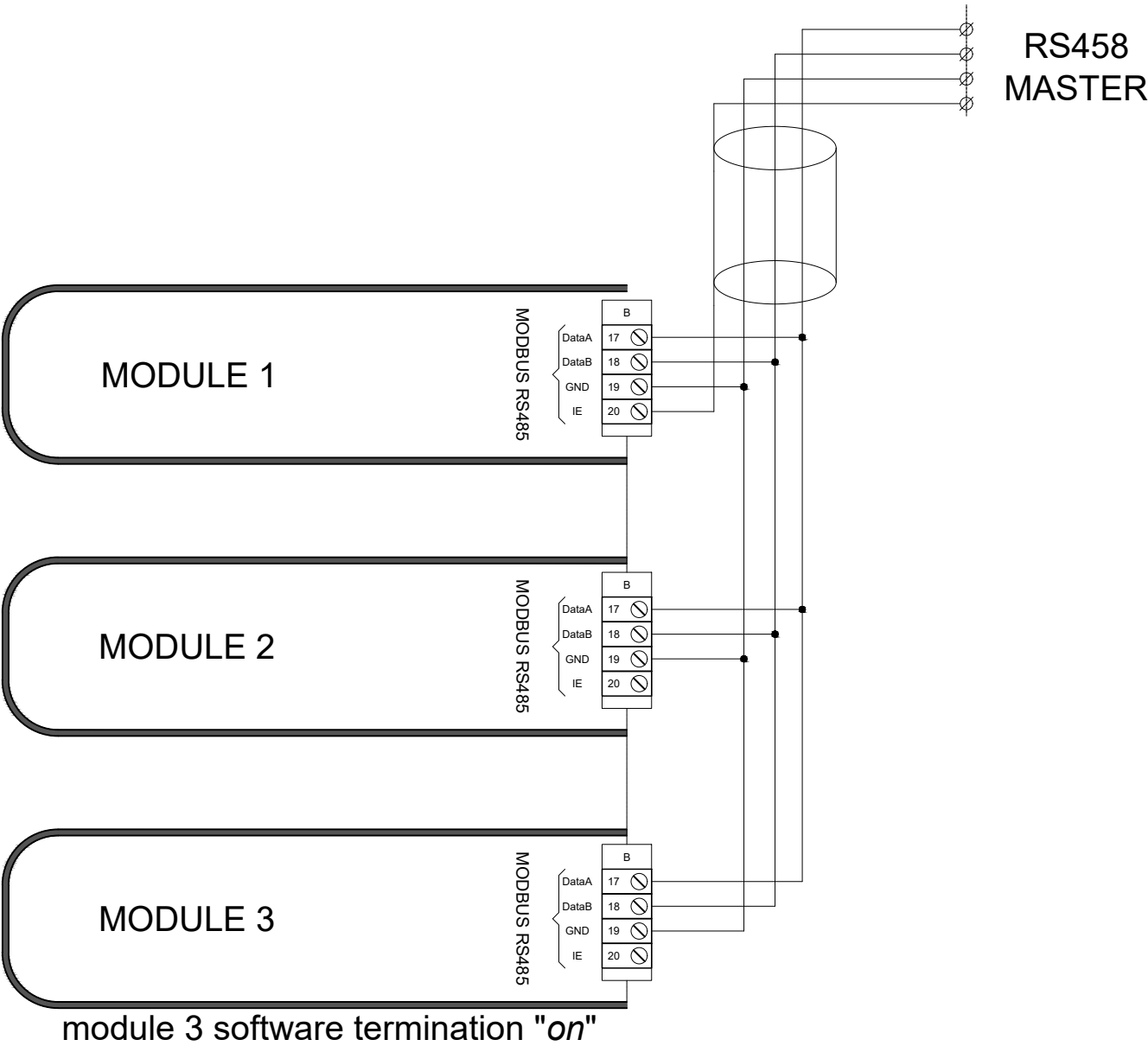
Connect earthing in accordance with drawing to ensure full functionality of the module!

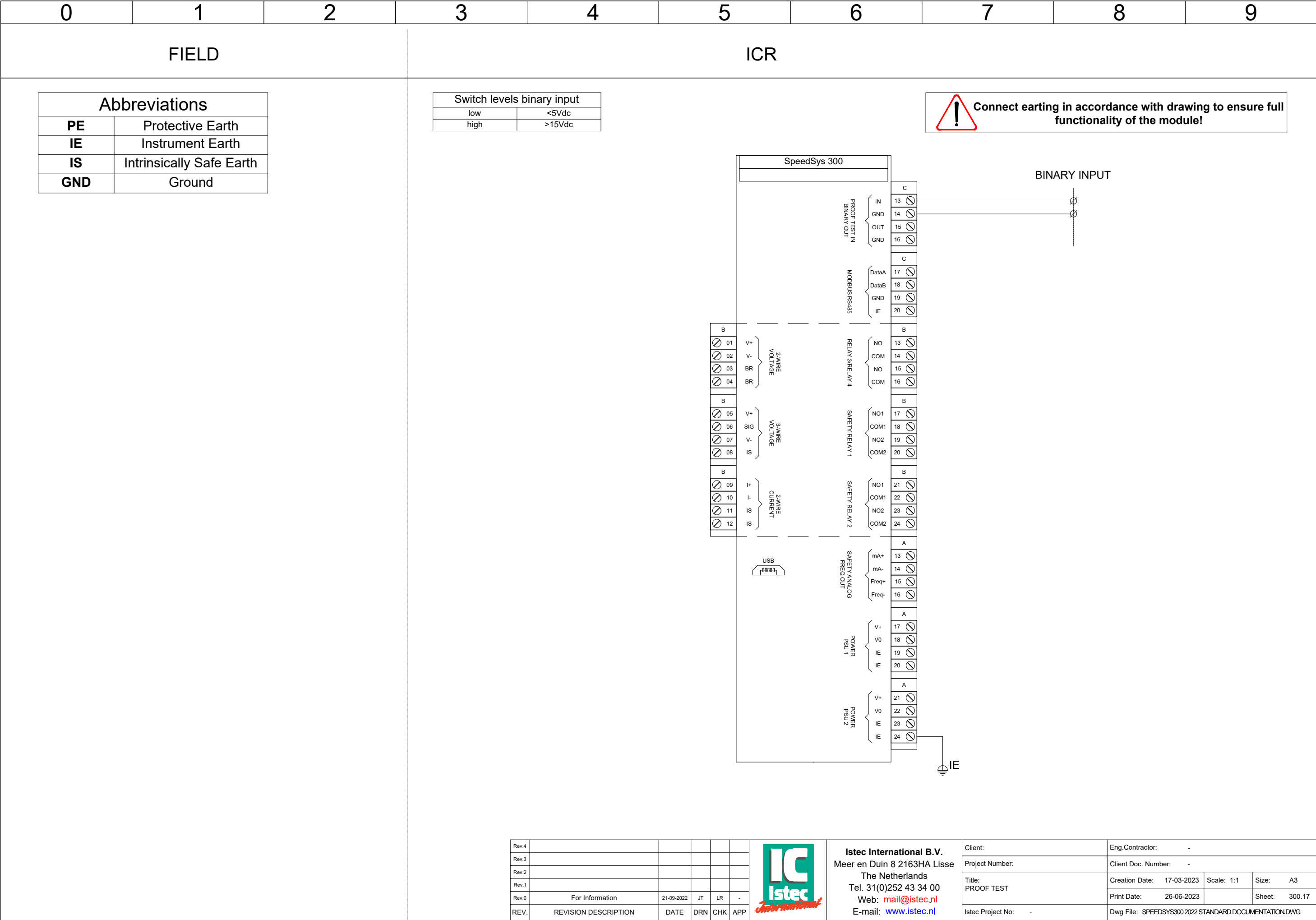
Abbreviations	
PE	Protective Earth
IE	Instrument Earth
IS	Intrinsically Safe Earth
GND	Ground



MODBUS

Abbreviations	
PE	Protective Earth
IE	Instrument Earth
IS	Intrinsically Safe Earth
GND	Ground





Abbreviations	
PE	Protective Earth
IE	Instrument Earth
IS	Intrinsically Safe Earth
GND	Ground

levels binary open collector output	
Voltage	24Vdc
Current	90mA



Connect earthing in accordance with drawing to ensure full functionality of the module!

